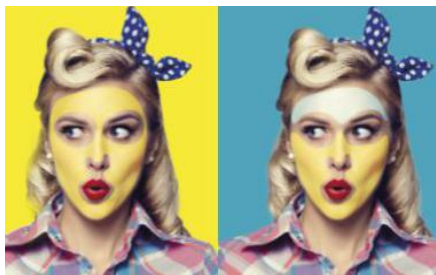




SKIN CARE

EU07427 | YELLOW POP ART

#Lightening#Multimasking

O/W
Emulsion

© 2023 Seppic - Docalysre

Skin radiance & lightening

A	Aqua/Water	Up to 100%
	Glycerin	2.00%
	Triethanolamine	0.80%
	SEPIWHITE™ MSH	1.00%
B	SEPINOV™ EMT 10	1.50%
	SOLAGUM™ TARA	0.25%
C	EMOGREEN™ L15	5.00%
	EMOGREEN™ L19	3.00%
	MONTANOV™ 202	2.00%
	MONTANOV™ 68 MB	2.00%
	LANOL P	3.00%
	Cetyl Esters	3.00%
	Octyldodecanol	5.00%
	Salicylic Acid	0.40%
	Tocopherol	0.10%
	D	SEA SHINE™
Phenoxyethanol - Ethylhexylglycerin		1.00%
Phenylpropanol - Propanediol - Caprylyl Glycol - Tocopherol		0.50%
Parfum/Fragrance		0.25%
E		Food Colorants

With WESOURCE

Glossy Yellow Thick Emulsion / Packaging: Transparent tube

pH: 6.1

VISCOSITIES: 1M at RT: 90,000 mPa.s Brookfield LV4-6. /**Recovery at RT (after 1M at 45°C):** 90,000 mPa.s Brookfield LV4-6.**STABILITY:** 1M stable at RT/45°C.**FORMULATION ADVICES / Pilot scale - 2 kg**

Melt phase C using a hot water bath at 85°C. Weigh ingredients of phase A with boiled water. SEPIWHITE™ MSH is added at the end & needs to be well dispersed. Then mix phase B & phase C. Emulsify by adding phase A into phase (B+C) at 4000 rpm during 6 minutes. Cool down under agitation with anchor at 100 rpm during 10 minutes. Add phase D homogenize at 100 rpm during 10 minutes with a cold water bath. At 25°C add phase E. Check the pH, it has to be between 5.5 & 6.6.

A burst of radiance from one touch of a brush!**SEASHINE™ & SEPIWHITE™ MSH** lighten the skin & restore a youthful looking radiance:**SEASHINE™** (Aqua/Water - Butylene Glycol* - Alaria Esculenta Extract - Undaria Pinnatifida Extract (*Plant-based & renewable))Water soluble easy to use active ingredient. *In vitro* efficiency on pigmentation key genes. **Lightening effect**, proved *in vivo*.**SEPIWHITE™ MSH** (Undecylenoyl Phenylalanine)

Lightening active ingredient, acting through an original pathway. α MSH antagonist ("Melanotropin"); decreases melanic pigments by respecting the cutaneous integrity.

MONTANOV™ 202 & MONTANOV™ 68 MB provide a perfect smooth texture for a mask.**MONTANOV™ 202** (Arachidyl Alcohol - Behenyl Alcohol - Arachidyl Glucoside)**MONTANOV™ 68 MB** (Cetearyl Alcohol - Cetearyl Glucoside)Glucolipid emulsifiers derived from vegetable origin. Promoter of liquid crystals, they maintain **skin moisturization over the time**.**SEPINOV™ EMT 10** shows a high resistance to electrolytes, and a boosted viscosity thanks to the synergy with **SOLAGUM™ TARA**.**SEPINOV™ EMT 10** (Hydroxyethyl Acrylate / Sodium Acryloyldimethyl Taurate Copolymer)Powder polymer "2-in-1", thickening in a wide pH range (3-12), ready to use. **Excellent stabilizing properties**. Sensory profile: "satin" touch, fresh, glide-on.**SOLAGUM™ TARA** (Caesalpinia Spinosa Gum)A **powerful thickening natural gum** from *Caesalpinia spinosa endosperm* seeds.

Synergistic efficiency with synthetic & natural polymers.

EMOGREEN™ L19 & EMOGREEN™ L15, bring gliding to a fresh & light application. They make the skin softer with a powdery afterfeel.**EMOGREEN™ L15** (C15-19 Alkane) (*Renewable)**EMOGREEN™ L19** (C15-19 Alkane) (*Renewable)**THE alternatives to volatile silicone oils!** Non polar & biodegradable, bio-sourced emollients.**LANOL P** (Glycol Palmitate), a texturizing agent to improve the consistency. Brings **soft skin feel**, without any soaping effect.**ADDITIONAL INGREDIENTS:** Phenoxyethanol - Ethylhexylglycerin: EUXYL PE9010 (SCHÜLKE & MAYR) / Phenylpropanol - Propanediol - Caprylyl Glycol - Tocopherol: SENSIVA PA40 (SCHÜLKE & MAYR) / Cetyl Esters: MIRACETI (LASERSON) / Octyldodecanol: ELTANOL G (COGNIS) / Tocopherol: DI ALPHA TOCOPHEROL (COGNIS) / Fragrance: PARFUM NEUTRAL (EXPRESSION PARFUMÉES) / Food colorant: Maltodextrine - Acid Citric: EXBERRY SHADE LEMON (GNT).**A formula related to MOOD PAINT concept**More informations available on **seppic.com**

*Data provide from OECD tests, QSAR calculations, products SDS & literature.

SEPPIC

All information contained herein is intended merely to demonstrate the utility of Seppic products, and should not be construed as granting license to practice any compositions or methods covered by a patent or a patent application. All information contained in this specific technical documentation is believed to be accurate and has been set up by Seppic according to its own described methods and processes. Seppic however does not assume any liability or risks involved in the use of its products for the preparation and the assessment of the hereinabove formulation since the condition of use are beyond its control. Seppic customer must insure the duplication of the hereinabove formulation is not infringing any intellectual property rights and that it complies with any regulatory status.

A company
Air Liquide
HEALTH CARE