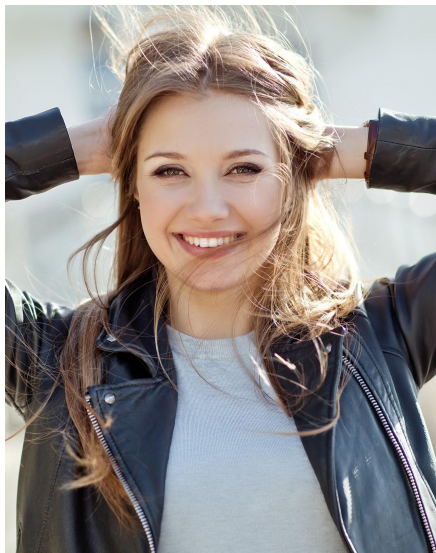




SKIN CARE

EU07497B | MULTI-PROTECTION CREAM

In vivo tested

O/W
EmulsionNATURALITY
PROFILE
according to
ISO 16128 norm

Face care
Protection & Hydration
Skin radiance

A	Aqua / Water	Up to 100 %
B	MONTANOV™ L	3.00 %
	EMOGREEN™ L15	3.00 %
	Organic Deodorized Sweet Almond Oil**	1.00 %
	DUB MCT 5545*	6.00 %
C	SEPIMAX ZEN™	0.90 %
	SEPINOV™ EMT 10	0.40 %
D	SAKADIKIUM™	3.00 %
	Phenoxyethanol - Ethylhexylglycerin	1.00 %
	Phenylpropanol - Propanediol - Caprylyl	0.50 %
	Glycol - Tocopherol	
	Fragrance	0.05 %

With WESOURCE™

*Stearinerie Dubois's product distributed in the US by SEPPIC Inc.

**SOPHIM's product distributed in the US by SEPPIC Inc.

White Cream / Packaging: Jar

Challenge test: Criteria A

pH: 5.5 to 6.5

VISCOSITIES: **1M** at RT: 72,600 mPa.s Brookfield LV4-6 /Recovery at RT (after **1M** at 45°C): 75,800 mPa.s Brookfield LV4-6.

STABILITY: 1M at RT, 45°C, and thermal cycles -5°C/+40°C.

FORMULATION ADVICES: Laboratory scale - 4 kg - Trimix

Heat phase A at 80°C. In a separate beaker, melt phase B at 80°C, and then add phase C and homogenize with a spatula. The mix (B+C) is added into the phase A under stirring (3000 rpm, 10 minutes). Cool down the mix and add phase D at 30°C.

A soft cream forming a protecting veil against daily aggressions: UV, blue light & pollution.

Protection & hydration for a radiant skin!

SAKADIKIUM™ increases the perceived radiance by 16%** versus placebo after 28 days of treatment (*in vivo* tested). The skin tone is brighter & more balanced (self-evaluation).

(Aqua/Water - Glycerin - Hedychium Coronarium Root Extract)
A concentrated extract of sugars from the rhizomes of *Hedychium coronarium*, that offers wide skin benefits: **multiprotector against UV, blue light & pollution.**

MONTANOV™ L emulsifies the oily phase, providing a light texture during spreading & encourages the skin hydration maintenance.

(C14-22 Alcohols - C12-20 Alkyl Glucoside)
Glucolipid emulsifier in harmony with nature. It has a **strong moisturizing power** (promotes liquid crystals, preventing the skin from dehydration / efficacy proven *in vivo*).

SEPIMAX ZEN™ & **SEPINOV™ EMT 10** association stabilizes the medium consistency formula.

SEPIMAX ZEN™ efficiently stabilize the formula.

(Polyacrylate Crosspolymer-6)

SEPINOV™ EMT 10 brings a light and fresh skin feel.

(Hydroxyethyl Acrylate / Sodium Acryloyldimethyl Taurate)

EMOGREEN™ L15 brings a fresh & light spreading. The skin is soft & smooth. (C15-19 Alkane*) (*Natural & Renewable):

Non polar & biodegradable, bio-sourced emollient, high purity vegetable alkane. It's THE alternative to volatile silicone oils. **Lightweight & non-greasy skin feel**, gives a **powdery finish**. Inert & stable, it can be used in all types of applications, even in extreme conditions (pH, oxidizing/reducing media...).

ADDITIONAL INGREDIENTS: Phenoxyethanol - Ethylhexylglycerin: EUXYL PE9010 (SCHÜLKE & MAYR) / Phenylpropanol - Propanediol - Caprylyl Glycol - Tocopherol: SENSIVA PA40 (SCHÜLKE & MAYR) / Prunus Amygdalus Dulcis (Organic Deodorized Sweet Almond Oil (SOPHIM) / Caprylyl/Capric Triglycerides: DUB MCT 5545* (STEARINERIE DUBOIS) / Fragrance: PARFUM NEUTROPHILE (EXPRESSION PARFUMES).

Informations available on seppic.com

SEPPIC

All information contained herein is intended merely to demonstrate the utility of Seppic products, and should not be construed as granting license to practice any compositions or methods covered by a patent or a patent application. All information contained in this specific technical documentation is believed to be accurate and has been set up by Seppic according to its own described methods and processes. Seppic however does not assume any liability or risks involved in the use of its products for the preparation and the assessment of the hereinabove formulation since the condition of use are beyond its control. Seppic customer must insure that the duplication of the hereinabove formulation is not infringing any intellectual property rights and that it complies with any regulatory status.

A company
Air Liquide
HEALTH CARE