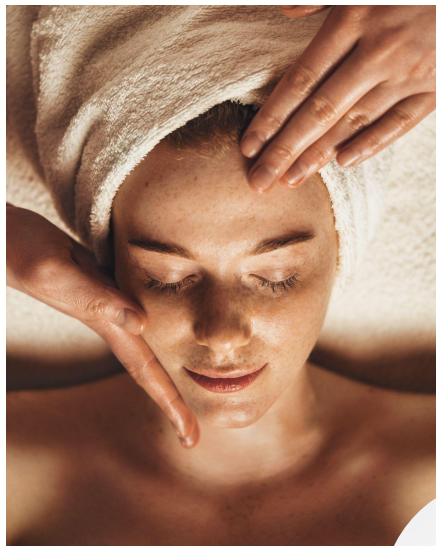




EU07779 | WELLNESS DO-IN MASSAGE OIL

The relaxing, soothing and enveloping oil



Oil



Soothing
Relaxation and Unwind
Well-being

A	LANOL 37T LANOL 1688	10.00% 63.40%
B	Prunus amygdalus dulcis oil Simmondsia chinensis seed oil	10.00% 10.00%
C	EMOGREEN™ HP40	5.00%
D	Tocopherol	0.20%
E	SEPIBLISS™ FEEL	1.00%
F	Perfume	0.40%

Yellow oil / Packaging: Dropper

pH: N/A.

STABILITY: 3M at RT, 45°C

FORMULATION ADVICES: Laboratory scale - Agitation tool
Mix all ingredients one by one with magnetic agitator.



COLD
PROCESS

An oil to find a balance, thanks to its relaxing and soothing properties.

The key to wellbeing to be applied in small touches on the face and body, with a massage ritual that will leave your skin soft.

A soft touch thanks to EMOGREEN™ HP 40 (C15-19 Alkane and Hydrogenated Polyfarnesene (Plant-based & Renewable) is a non polar and inherently biodegradable, bio-sourced emollient. **It's a sustainable alternative to heavy silicones** in formulation. This high purity versatile texturing ingredient brings comfort to all type of care. Multifaceted ingredient, it provides film forming properties with a soft and supple afterfeel. Its silky protective effect and versatility will be appreciated in skin and bodycare applications.

SEPIBLISS™ FEEL, wellbeing ally, (Coriander Sativum (Coriander Seed Oil), in a **natural oil** form from coriander seed. It is highly tolerant due to a high percentage of petroselinic acid, known for its soothing properties. Sourced in the South of France, it is the perfect active ingredient that **acts both on your skin and mind through an innovative wellness approach** with an acupuncture-like action, a happiness molecules protection and a skin comfort enhancement.

LANOL37T (Triheptanoïn) provides a soft, comfortable and rich finish; associated to **LANOL1688** (Cetearyl Ethylhexanoate) facilitating the spreading and the penetration of the oil on the skin.

ADDITIONAL INGREDIENTS: Tocopherol BASF / Prunus amygdalus dulcis oil BERTIN / Simmondsia chinensis seed oil SOPHIM / Parfum ROSIER DAVENNE

More informations available on seppic.com

* Data provide from OECD tests, QSAR calculations, products SDS and literature.

SEPPIC

All information contained herein is intended merely to demonstrate the utility of Seppic products, and should not be construed as granting license to practice any compositions or methods covered by a patent or a patent application or efficacy or tolerance. All information contained in this specific technical documentation is believed to be accurate and has been set up by Seppic according to its own described methods and processes. Seppic however does not assume any liability or risks involved in the use of its products for the preparation and the assessment of the hereinabove formulation since the condition of use are beyond its control. Seppic customer must insure that the duplication of the hereinabove formulation is not infringing any intellectual property rights and that it complies with any regulatory status. Formula only for demonstration purposes.

A company
Air Liquide
HEALTH CARE