

# CURLY HAIR SENSORIAL CREAM (EU07812)

A leave-in gel in oil surprising texture for lastingly defined curls.

<b>A</b>	Aqua/Water		74.63%
	<b>SIMULQUAT™ HC 305</b> (Acrylamidopropyltrimonium Chloride/Acrylates Copolymer, Isohexadecane, Coceth-7)	<b>Seppic</b>	<b>2.50%</b>
	Glycerin		4.00%
	Sol. 1% C.I. 19140	Sensient LCW	0.10%
	Sol. 1% C.I. 15985	Sensient LCW	0.07%
<b>B</b>	Sol. 12% TEA		qs pH
	<b>EASYNOV™</b> (Octyldodecanol Octyldodecyl Xyloside, PEG-30 Dipolyhydroxystearate)	<b>Seppic</b>	<b>2.50%</b>
	<b>EMOGREEN™ HP 40</b> (C15-19 Alkane, Hydrogenated Polyfarnesene)	<b>Seppic</b>	<b>2.00%</b>
	Cocos Nucifera oil	Olvea	1.00%
	Octyldodecanol		8.00%
<b>C</b>	Fragrance Smooth Caress	EP	0.20%
	<b>XYLISHINE™ C</b> (Xylitylglucoside, Anhydroxylitol, Maltitol, Xylitol, Pelvetia Canaliculata Extract)	<b>Seppic</b>	<b>3.00%</b>
	Polyquaternium-7	Lubrizol	1.00%
	Phenoxyethanol, ethylhexylglycerin	DKSH	1.00%

**Aspect** : Pale orange light cream

**pH**: NA/ **VISCOSITIES: 1D at RT**: 27 000 mPa.s Brookfield M4V6, **after 1M at TA**: 38 500 mPa.s Brookfield M4V6

**Recovery at RT (after 1M at 45°C)**: 27 600 mPa.s Brookfield M4V6

**STABILITY**: 3M at RT, 45°C

## FORMULATION ADVICES: Pilot scale - 6kg batch - Trimix, defoculator

Weigh phase A water. Add glycerine, then dyes, stirring at 500rpm. Then add Simulquat, stirring at 1800rpm for 5min. Continue for 10min, adding light agitation around the edges of the tank. Adjust pH to between 4 and 4.5. Weigh phase D and melt at 50°C. Once homogeneous, add the perfume. Then pour into the vat under slow anchor agitation for 1min at 20rpm, then 10min at max speed (94rpm). Weigh the ingredients of phase C and add them one by one to mixture A+B under anchor agitation (50rpm).

All information contained herein is intended merely to demonstrate the utility of Seppic products, and should not be construed as granting license to practice any compositions or methods covered by a patent or a patent application or efficacy or tolerance. All information contained in this specification is the property of Seppic and is not to be disclosed, copied, reproduced, or used in any way without the prior written consent of Seppic according to its own described methods and processes. Seppic however does not assume any liability or risks involved in the use of its products for the preparation and the assessment of the hereinabove formulation since the condition of use are beyond its control. Seppic customer must insure that the duplication of the hereinabove formulation is not infringing any intellectual property rights and that it complies with any regulatory status. Formula only for demonstration purposes. Seppic has not tested efficacy, toxicology and safety of this formulation if not mention.

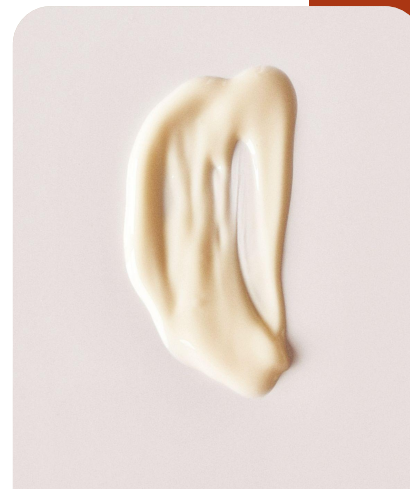
## HIGHLIGHT:

In association with **SIMULQUAT™ HC 305**, **EASYNOV™** creates this unique gel-in-oil texture from our **GELTRAP™** patented technology.

**EMOGREEN™ HP40** provides film forming properties with a soft and supple afterfeel. It brings a conditioning effect.

**XYLISHINE™ C** controls the volume of hair and repairs hair cuticle restoring hair & water interactions.

*Apply on damp and detangled hair per section. Scrunch to define curls.*



NATURALITY  
PROFILE  
according to  
ISO 16128 norm

GEL IN OIL TEXTURE

CURLS DEFINED, NO FRIZZ

CONDITIONING & SHINE