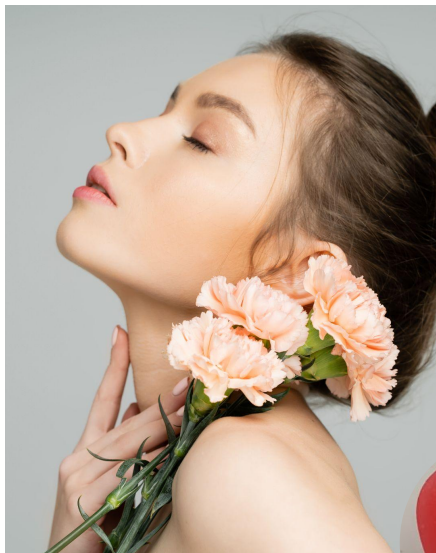




SKIN CARE

LA60074 | SOLID JELLY PERFUME

Your everyday perfume with a fun application



Fresh and quickly absorbed

Jelly texture

Fun texture

A	Aqua/Water	Up to 100%
	Glycerin	5.00%
	Propanediol	5.00%
	Colorant Red 4	0,0040%
B	Agar	2.00%
	SOLAGUM™ AX	1.00%
C	Perfume	5.00%
	SEPICLEAR G7™	3.00%
D	Phenoxyethanol and Ethylhexylglycerin	1.00 %

Solid red jelly / Packaging: Jar

STABILITY: 1M at RT

FORMULATION ADVICES: Laboratory scale - 200g

Prepare phase A: Heat water at 90 C and disperse the Agar + Solagum AX under stirring (1500 rpm) until total dispersion. Add phase C and D around 60-70C. Add in a silicone mold. After cooling relise.

A jelly texture for an easy application of your perfume and a non-sticky finish.

A fun way to apply your perfume!

SEPICLEAR G7™ helps the fragrance solubilisation (Heptyl Glucoside).

100% bio-based **O/W concentrated solubilizer**, easy to use and energy saving (cold processable). Sepiclear G7™ is a non-foaming agent, that allows the **solubilization of liposoluble compounds** (essential oils, vitamin E and fragrances). Readily biodegradable : 82.25% in 28 days* with *: OECD 301 F method* Halal certified. Cosmos and Natrue Approved. Vegan suitable.

SOLAGUM™ AX brings a soft and non-sticky after-feel and a film-forming effect to this jelly. (Acacia Senegal Gum - Xanthan Gum)

Smart **combination of natural thickening polymers**. SOLAGUM™ AX also displays emulsifying properties that allow to stabilize up to 15% of oils. It also offer good compatibility with hydrophilic pigments allowing to create all kind of formulation. Ecocert and Natrue approved.

ADDITIONAL INGREDIENTS: Glycerin (CODEX) / Propanediol / Colorant Red4 / Agar : AGAR AGAR / Perfume / Phenoxyethanol and Ethylhexylglycerin : Preservative Euxyl PE 9010 (SCHULKE AND MAYR)

More informations available on [seppic.com](https://www.seppic.com)

* Data provide from OECD tests, QSAR calculations, products SDS and literature.

SEPPIC

All information contained herein is intended merely to demonstrate the utility of Seppic products, and should not be construed as granting license to practice any compositions or methods covered by a patent or a patent application or efficacy or tolerance. All information contained in this specific technical documentation is believed to be accurate and has been set up by Seppic according to its own described methods and processes. Seppic however does not assume any liability or risks involved in the use of its products for the preparation and the assessment of the hereinabove formulation since the condition of use are beyond its control. Seppic customer must insure that the duplication of the hereinabove formulation is not infringing any intellectual property rights and that it complies with any regulatory status. Formula only for demonstration purposes.

A company
Air Liquide
HEALTHCARE