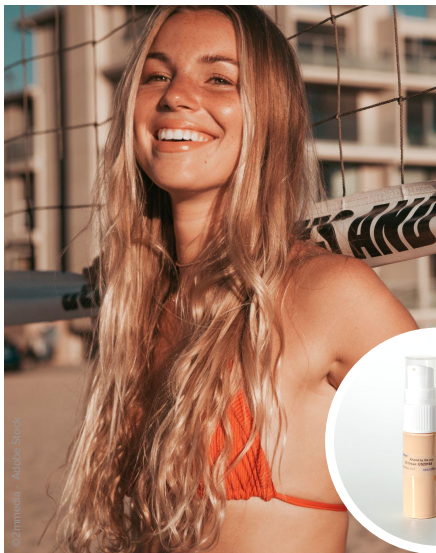




SKIN CARE

US20164 | Kissed by the sun - CC Cream

Color correcting, tinted emulsion



O/W Emulsion



Natural luminous tan

Firming effect

Moisturizing

NOC= 97.2%

NATURALITY PROFILE according to ISO 16128 norm

A	Water AQUAXYL™ Glycerin	63.76% 1.50% 5.00%
B	DUB OE HP MB* DUB ESTOLINE®* EMOGREEN™ L19 Titanium Dioxide Iron Oxide Red Iron Oxide Black Iron Oxide Yellow	7.00% 3.00% 7.00% 4.00% 0.18% 0.06% 0.50%
C	MONTANOV™ 82	3.50%
D	TIMECODE™	1.00%
E	SEPI NOV™ EMT 10 LUMIPOD™	1.00% 1.00%
F	Phenylpropanol (and) Propanediol (and) Caprylyl Glycol (and) Tocopherol Fragrance "Silky Shea"	1.00% 0.50%

Beige Tinted Cream / Packaging: Pump With WESOURCE

pH: 5.3 / **VISCOSITIES:** 1M at RT: 45,150 cps Brookfield LV96V6
Recovery at RT (after 1M at 45°C): 49,780 cps Brookfield LV96V6
STABILITY: Passed 3 month at RT, 45°C, 3 F/T cycles -5°C/+40°C, & 3 F/T cycles -18°C/RT
FORMULATION ADVICES: Laboratory scale - 300g - Defloculator
 Combine phase A ingredients together and heat to 80°C. Combine phase B together and homogenize with high shear to disperse TiO2 and Iron Oxides, then add phase C ingredients one by one and heat to 80°C. Add phase D ingredients one by one into (BC) while maintaining temperature at 80°C. Combine phase A and oil phase (BCD) and homogenize at 4,000 RPM for 4 minutes; during homogenization add phase E. Cool down the batch with low shear mixing to 35°C then add F. Continue mixing and cool down the batch to ambient temperature.

Even skin tone, healthy glow and hydration in only one product with this tinted cream

Get your post-vacation glow back!

MONTANOV™ 82 provides outstanding emulsifying properties with high compatibility with pigments (Cetearyl Alcohol and Coco-Glucoside)
 Glucolipid emulsifier 100% from vegetable origin, for various textures and consistencies: from spray to butter cream with a soft & rich sensorial profile.

SEPI NOV™ EMT 10 stabilizes this tinted emulsion and provides a fresh, slippery and satin feel! (Hydroxyethyl Acrylate/Sodium Acryloyldimethyl Taurate Copolymer)
 A pre-neutralized powder polymeric thickener, working on a wide pH range (3-12). It also provides excellent oil stabilizing property even in presence of a high percentage of oily phase.

EMOGREEN™ L19 & DUB OE HP MB* light emollients offer good silicone alternatives

EMOGREEN™ L19: non polar and biodegradable, bio-sourced alkanes with a fresh and gliding touch, soft afterfeel and restructuring very dry skin. (C15-19 Alkane - Plant-based & Renewable)

DUB OE HP MB*: a natural ester ideal for D5 replacement with high spreadability (Ethyl Oleate)

DUB ESTOLINE®* polymer ester offers good pigment dispersion and suspension with skin moisturization benefits (Ethylhexyl polyhydroxystearate)
 A comforting and protecting highly structured ester with a surprising honey-like yet non-sticky texture. Film forming, it brings moisturization and protecting properties.

A trio of actives to boost natural skin tan, correct skin color and wrinkles and moisturize the skin

LUMIPOD™ is a tan booster in normal daily sun exposure, with a long lasting effect up to 2 weeks after use (Isosorbide and Caprylyl/Capryloyl Leucine Isosorbide Esters)
TIMECODE™ - the bliss molecule - illuminates, corrects and firms the skin (Palmitoyl Glycine). Clinically proven to rejuvenate the complexion and reduce redness
AQUAXYL™ boosts hyaluronic acid, ceramides and aquaporin for skin hydration (Xylitylglucoside and Anhydroxylytol and Xylitol)

ADDITIONAL INGREDIENTS: Titanium Dioxide: RBTD-671-1152 (KOBO) / Iron Oxide Red: BRO-1152 (KOBO) / Iron Oxide Black: BBO-12 (KOBO) / Iron Oxide Yellow: BYO-1152 (KOBO) / Phenylpropanol (and) Propanediol (and) Caprylyl Glycol (and) Tocopherol: Sensiva® PA 40 (SCHULKE) / Fragrance "Silky Shea": SZUSO44445 (Sozio)

* Stearinerie Dubois's product distributed in the US by SEPPIC Inc.

SEPPIC

All information contained herein is intended merely to demonstrate the utility of Seppic products, and should not be construed as granting license to practice any compositions or methods covered by a patent or a patent application. All information contained in this specific technical documentation is believed to be accurate and has been set up by Seppic according to its own described methods and processes. Seppic however does not assume any liability or risks involved in the use of its products for the preparation and the assessment of the hereinabove formulation since the condition of use are beyond its control. Seppic customer must insure that the duplication of the hereinabove formulation is not infringing any intellectual property rights and that it complies with any regulatory status.

A company
Air Liquide
 HEALTH CARE