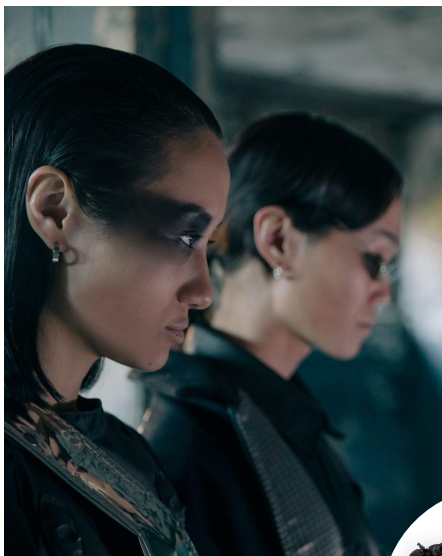




SKIN CARE

# US20183 | ROCK YOUR MASK

A purifying black charcoal stick mask, gentle for your skin.



NATURALITY PROFILE according to ISO 16128 norm



Waterless stick

Purifying mask

Gentle for the skin

\* OECD 301 F method

<b>A</b>	<b>EMOGREEN™ L19</b>	<b>7.00%</b>
	<b>MONTANOV™ 202</b>	<b>5.00%</b>
	<b>VEGELINE 65****</b>	<b>26.50%</b>
	<b>PHYTOWAX® OLIVE 10L40****</b>	<b>5.00%</b>
	<b>DUB CIRE H1****</b>	<b>27.00%</b>
	<b>KARITE CP****</b>	<b>5.00%</b>

<b>B</b>	<b>DUB SK***</b>	<b>15.00%</b>
	Charcoal Powder	<b>2.00%</b>

<b>C</b>	<b>MICRO ALGUE 80</b>	<b>6.00%</b>
----------	-----------------------	--------------

<b>D</b>	<b>ANTILEUKINE 6™</b>	<b>1.00%</b>
----------	-----------------------	--------------

<b>E</b>	Fragrance Rock II 2234165	<b>0.50%</b>
----------	---------------------------	--------------

\*\*\*Stéarinerie Dubois and \*\*\*\*SOPHIM products distributed in the US by SEPPIC Inc.

**Black solid/ Packaging: Stick**

**pH: NA / VISCOSITIES: 1M at RT: NA**  
**STABILITY: 3M at RT, 45°C, 3F/T cycles -5°C/+40°C.**

**FORMULATION ADVICES: 200 g - Hot plate & mixer**

Combine Phase A together and heat to 85 °C and mix well. Then while maintaining temperature at 85°C and mixing add one by one phase B ingredients to make a uniform black liquid. Then while mixing, cool down the batch and at 70 °C add phase C, then add phase D at 65 °C, then add phase E at 64°C. Pour into the jars at 63°C.

**A 3-step face mask for a purified skin:**  
**apply a generous layer, leave on for 10 to 15 minutes,**  
**massage to scrub and rinse with clear water.**

*The dark side of the rocker that reveals purity and softness!*

**MONTANOV™ 202** texturizes and stabilizes the oily phase while helping cleansing during rinse off. (Arachidyl Alcohol and Behenyl Alcohol and Arachidyl Glucoside)  
Glucolipid emulsifier of plant origin made in France. **Liquid crystal promoter**, it allows to create very stable biomimetic textures, providing **long-lasting hydration** and an **immediate restructuring effect** for a smoother skin texture. COSMOS and NATRUE approved. Readily biodegradable : 67% in 28 days\*

**EMOGREEN™ L19** brings a refreshing and gliding sensation with a soft afterfeel. (C15-19 Alkane (Plant-based & Renewable))  
EMOGREEN™ L19 is a non polar and biodegradable, bio-sourced emollient. It's THE alternative to silicone oils. This high purity vegetable alkane is conformed to Cosmos and Natrue. It gives a **fresh and gliding touch**, with a **soft afterfeel**.

**MICRO ALGUE 80** adds a **soft scrubbing effect** to this mask. (Diatomaceous Earth)  
Gentle marine peeling agent for renewing skin.

**Oily active ingredient, ANTILEUKINE 6™** soothes, reinforces and protects the skin. (Caprylic/Capric Triglyceride and Laminaria Ochroleuca Extract)  
It is an immediate soother with anti-ageing benefits that also improves skin quality. It reinforces the basal state of the skin and protects it from UV, blue light and neurogenic stress creating a **Daily Soothing Shield**!

### Partner Ingredients

**DUB CIRE H1\*\*\*\*** (C10-18 Triglycerides) offers unique sensorial feel on the skin with a **velvety and comforting skin finish**. Unique texturizing and **melting properties** with a **long-lasting residual film**.

**KARITE CP\*\*\*\*** (Butyrospermum Parkii (Shea) Butter) sensorial emollient high in unsaponifiables providing a **rice enveloping non-greasy skin feel**. Obtained by mechanical pressure of Shea nuts at ambient temperature, **KARITE CP\*\*\*\*** is **100% natural and solvent-free**. It has a very high content of **unsaponifiables and non-greasy skin feel**

**PHYTOWAX® OLIVE 10L40\*\*\*\*** (Melting point 35-42°C) is a natural wax from olives. Melting point is 35-42°C allows for the melting sensation on the skin. Great alternative to synthetic waxes, it increases the consistency and creaminess of the formula, with a unique feel: easily spreadable, non greasy and non sticky, with nourishing properties.

**VEGELINE 65\*\*\*\*** (Ricinus Communis (Castor) Seed Oil (and) Hydrogenated Castor Oil (and) Copernicia Cerifera (Carnauba) Wax) Petroleum alternative, this sensorial emollient is used as thickening agent for this anhydrous formulation providing structure, consistency and viscosity to finished product. Natural alternative to petrolatum, this 100% natural texturizing emollient has a high melting point of 62-72C, is very soft during application, provides film forming effect with water resistant properties.

**ADDITIONAL INGREDIENTS:** Charcoal Powder, and Fragrance Rock II 2234165

More informations available on [seppic.com](http://seppic.com)

**SEPPIC**

All information contained herein is intended merely to demonstrate the utility of Seppic products, and should not be construed as granting license to practice any compositions or methods covered by a patent or a patent application or efficacy or tolerance. All information contained in this specific technical documentation is believed to be accurate and has been set up by Seppic according to its own described methods and processes. Seppic however does not assume any liability or risks involved in the use of its products for the preparation and the assessment of the hereinabove formulation since the condition of use are beyond its control. Seppic customer must insure that the duplication of the hereinabove formulation is not infringing any intellectual property rights and that it complies with any regulatory status. Formula only for demonstration purposes.

**Air Liquide**  
HEALTH CARE