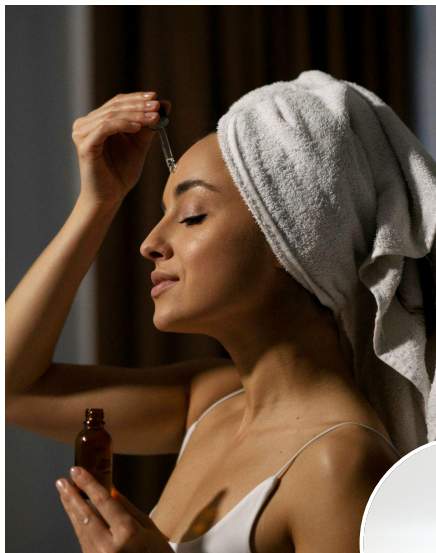




US20196 | RICH TREATMENT MILK

A rich milky-like overnight serum



NATURALITY PROFILE according to ISO 16128 norm



Light & silky skin-feel
Long term moisturization
Long lasting antioxidant effect

A	Water Rosabora	30.20% 0.30%
B	Water Glycerin FLUIDIFEEL™ EASY Benzyl Alcohol - Benzoic Acid- Dehydroacetic Acid - Tocopherol	3.00% 7.00% 2.00% 1.00%
C	EMOGREEN™ L19 DUB LAHE* DUB OE HP* DUB ESTOLINE* KARITE ON** EPHEMER™ Fresh Aloe Fragrance	10.00% 20.00% 19.00% 2.00% 3.00% 1.00% 0.20%
D	SEPIMAX ZEN™	0.20%
E	Sodium Hydroxide, 25% solution	0.10%
F	SEPIFINE™ BB	1.00%

* Stearinerie Dubois & ** SOPHIM's product distributed in the US by SEPPIC Inc.

Liquid milk like texture / Packaging: Dropper

pH: 5.6 / **VISCOSITIES: 1M at RT:** 7,758 cps, Brookfield LV63 @6rpm

Recovery at RT (after 1M at 45°C): 8,438 cps, Brookfield LV63 @6rpm

Stability: Passed 3 months at RT, 45°C, & 3 F/T cycles @ -5°C/+40°C.

FORMULATION ADVICES: Laboratory scale - 300 g

Combine phase A and heat to 55°C while mixing until Rosabora dissolved. Combine phase B and gently mix at 65-70rpm with sweeper for 15 minutes. Combine phase C and mix well. Increase mixing speed of phase B to 170 rpm and slowly add phase C very slowly to phase B. After addition of phase C, mix for another 15 minutes and then slowly add phase A to phase BC. Turn the homogenizer to 4,000rpm and sprinkle sepimax zen into the vortex and homogenize for 4 minutes. Add phase E and F. Check and adjust pH if necessary to between 5 - 6.

This high oil load cream like texture breaks down fast during application.

A refreshing serum that works overnight so you can look your best in the morning!

Imparts rich, velvet and elegant skin feel **SEPIMAX ZEN™** (Polyacrylate Crosspolymer-6) **Pre-neutralized powder polymeric thickener** with a **MAXIMUM resistance to electrolytes** thanks to its high associative behavior. **Efficient** on a wide range of pH from 3 to 8.

FLUIDIFEEL™ EASY (Lauryl Glucoside - Myristyl Glucoside - Polyglyceryl-6 Laurate), **emulsifies and stabilizes the formula, it provides a "nude" skin feel.** O/W glycolipidic emulsifier processable at room temperature.

Gives a **fresh and gliding touch, with a soft afterfeel!** **EMOGREEN™ L19** (C15-19 Alkane (Plant-based & Renewable) a **non polar and biodegradable, bio-sourced emollient.** It's **THE alternative to silicone oils.** This **high purity vegetable alkane** is conformed to Cosmos and Natrue. Inert and stable.

SEPIFINE™ BB (Amylopectin) This **biodegradable powder provides a soft and velvety skin finish while creating a pleasant playtime and matt effect.** A **natural texturizing powder**, ethically sourced, coming from babassu nut **exclusively sourced in Brazil.** Readily biodegradable: >75% in 28 days* with * : OECD 301F method

EPHEMER™ (Caprylic/Capric Triglyceride and Undaria Pinnatifida Extract) **Unique sourcing of these ephemeral cells for an immediate and long lasting antioxidant effect.** Extract of gametophytes, macroalgae cells of Undaria Pinnatifida, from **CELEBRITY™** technology. Specific efficacy on mitochondrial-free-radical reduction (in vitro study). In vivo, after 28 days, **the skin strengthens its antioxidant capacity,** versus placebo.

Partner ingredients

DUB LAHE* (Hexyl laurate) is used for its unique **light skin feel and hydrating boosting capabilities.** A 11 replacement for isoheaxadecane.

DUB OE HP* (Ethyl oleate) A **100% vegetable emollient ester with unique sensory properties,** offering an alternative to petroleum-derived emollients like silicones. **DUB OE HP** forms a **pleasurable protective veil on the skin** due to its **perfect tolerance and biomimetic composition.**

Film forming, it **brings moisturization and protecting properties!** **DUB ESTOLINE*** (Ethylhexyl polyhydroxystearate) polymer ester **offers good pigment dispersion and suspension with skin moisturization benefits.** A comforting and protecting highly structured ester with a **surprising honey-like yet non-sticky texture.**

KARITE ON** (Butyrospermum Parkii (Shea) Butter Extract) **deeply hydrate and nourish the skin.**

ADDITIONAL INGREDIENTS: Euxyl K 903 (pH </=6) (ASHLAND) / Fragrance "Fresh Aloe" (SOZIO)

More informations available on seppic.com



All information contained herein is intended merely to demonstrate the utility of Seppic products, and should not be construed as granting license to practice any compositions or methods covered by a patent or a patent application. All information contained in this specific technical documentation is believed to be accurate and has been set up by Seppic according to its own described methods and processes. Seppic however does not assume any liability or risks involved in the use of its products for the preparation and the assessment of the hereinabove formulation since the condition of use are beyond its control. Seppic customer must insure that the duplication of the hereinabove formulation is not infringing any intellectual property rights and that it complies with any regulatory status. Formula only for demonstration purposes.