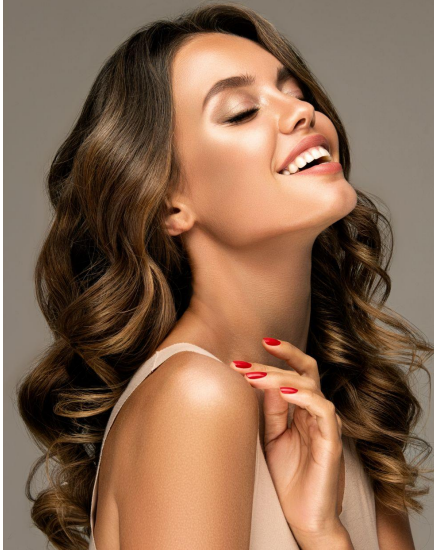




US20197 | LUMIPOD FACE CREAM

A moisturizing and protective cream for a safe and gorgeous tan



NATURALITY PROFILE according to ISO 16128 norm

Sun-kissed Effect

Lightweight Skin Feel

Moisturizing & Fast Absorption

A	Water Glycerin AQUAXYL™ Phenoxyethanol (and) Ethylhexylglycerin	75.00% 3.00% 1.50% 1.00%
B	MONTANOV™ 202 EMOGREEN™ L19 DUB OE HP*	3.00% 6.00% 3.00%
C	FLUIDANOV™ 20X LUMIPOD™	3.00% 1.00%
D	NATIVE ESSENCE™	1.00%
E	SEPINOV™ EMT 10	0.50%

* Stearinerie Dubois' products distributed in the US by SEPPIC Inc.

White smooth cream / Packaging: Jar

pH: 6.1 / **VISCOITIES: 1M at RT:** 24,890 cps, Brookfield LV96 @6rpm
Recovery at RT (after 1M at 45°C): 26,500 cps, Brookfield LV96 @6rpm
STABILITY: 1M at RT & 45°C, 3F/T cycles -5°C/+40°C.

FORMULATION ADVICES: Laboratory scale - 300 grams - Homogenizer & Overhead mixer

Protocol: Combine phase A and heat to 85C. Combine phase B and heat to 85C. Dissolve Lumipod in phase C and heat to get a clear oil and then add C, D, and E into B and mix well. Combine phase A and phase BCDE together and homogenize for 4 minutes at 4,000rpm. Cool down the batch to room temperature. Check and adjust to pH 5.5 - 6.5.

A lightweight face cream carefully designed for a natural tan booster with a healthy glowy sun-kissed effect.

For a radiant long-lasting tanned skin without UV stimulation!

SEPINOV™ EMT 10 (Hydroxyethyl Acrylate/Sodium Acryloyldimethyl Taurate Copolymer) a **versatile pre-neutralized powder polymeric thickener** with **excellent stabilizing properties**. It imparts **sating and fresh skin feel**.

MONTANOV™ 202 (Arachidyl Alcohol and Behenyl Alcohol and Arachidyl Glucoside) provides **long-lasting hydration and an immediate restructuring effect for a smoother skin texture**. Glucolipid emulsifier of **plant origin** made in France. **Liquid crystal promoter**, it allows to create very stable biomimetic textures.

Contributing to stabilize W/O & O/W emulsions and improve skin feeling, FLUIDANOV™ 20X! (Octyldodecanol and Octyldodecyl Xyloside) W/O COSMOS approved co-emulsifier with an original xylolipidic structure. **Extra-fluid and easy to use**.

The combination of **EMOGREEN™ L19** and **AQUAXYL™** for a **boost of moisturization with a fresh and gliding touch, leaving the skin with a soft afterfeel**.

EMOGREEN™ L19 (C15-19 Alkane (Plant-based & Renewable)) A **non polar and biodegradable, bio-sourced emollient**. It's **THE alternative to silicone oils**. This **high purity vegetable alkane** is conformed to Cosmos and Natrue.

AQUAXYL™ (Xylitylglucoside and Anhydroxylitol and Xylitol) **Moisturizes and restructures the skin** by harmonizing the hydric flow of the skin. **Water reserves are instantly boosted**, water circulation is **improved in all skin layers and water loss is reduced**.

LUMIPOD™ (Isosorbide (and) Capryloyl/Capryloyl Leucine Isosorbide Esters) As a leucine based lip amino acid, **LUMIPOD™ prepares the skin for a "sun-kissed" tan**. **LUMIPOD™ is a tan booster in normal daily sun exposure, with a long lasting effect up to 2 weeks after use**. **LUMIPOD™ induces melanin synthesis and melanosome transfer**.

NATIVE ESSENCE™ (Caprylic/Capric Triglyceride and Crithmum Maritimum Extract) **Detoxifying active extracted from a halophyte plant**, Sea Fennel, which **restores hydrolipidic barrier** (ceramides 3 & 6) and provides radiance to the skin

Partner Ingredient

DUB OE HP* (Ethyl Oleate) **improves very good spreadability, ultra light skin feel & soft finish**. A **natural ester ideal for D5 replacement**. Comparable to cyclopentasiloxane (D5) but with a better playtime. **It helps reducing oily feel and is highly compatible with others oils, and can even act as a liposoluble solubilizer**.

ADDITIONAL INGREDIENTS: Phenoxyethanol (and) Ethylhexylglycerin: Euxyl PE 9010 (ASHLAND) / Fragrance Magic Berry SZUM000117(SOZIO)

More informations available on seppic.com



All information contained herein is intended merely to demonstrate the utility of Seppic products, and should not be construed as granting license to practice any compositions or methods covered by a patent or a patent application. All information contained in this specific technical documentation is believed to be accurate and has been set up by Seppic according to its own described methods and processes. Seppic however does not assume any liability or risks involved in the use of its products for the preparation and the assessment of the hereinabove formulation since the condition of use are beyond its control. Seppic customer must insure that the duplication of the hereinabove formulation is not infringing any intellectual property rights and that it complies with any regulatory status. Formula only for demonstration purposes.

